

FOR EXTERNAL RELEASE

April 22, 2020

Marketing contact:
Martin Van Der Linde
General Manager -
Marketing

Tel : +61 7 3907 8777
Fax : +61 7 3399 6777
martinv@nojapower.com.au
www.nojapower.com.au

Australian Switchgear Engineers release New Recloser Product

Switchgear engineering firm NOJA Power today advise the release of their brand new Single Triple Recloser. Unlike conventional European ganged three phase circuit breaking, the Single Triple OSM Recloser provides un-ganged independent phase protection for three phase electricity distribution lines. This switchgear arrangement is commonly applied for protection of four wire distribution networks and triplex Single Wire Earth Return (SWER) topologies.

The new NOJA Power OSM Single Triple ACR is controlled by any current standard NOJA Power RC control system, providing comprehensive protection, control and smart grid automation, with the RC15 variant including integrated GPS, cellular communications for SCADA and local area wireless communications.

Single Triple OSM Reclosers can operate in multiple modes of single and three phase protection. Protection engineers are presented with flexibility in configuration to cater to network performance requirements in the RC series controls for the OSM Recloser. For example, configuration options such as single phase reclosing coupled with three phase lockout are available to cater for network



NOJA Power OSM Single Triple Recloser

requirements which target improved single phase reliability but handle issues with ferroresonance on single phase tripping. An extensive overview on feature capability is available on further request from the organisation.

Following the mantra of all other NOJA Power switchgear products, the new Single Triple OSM Recloser has zero SF6 gas, instead utilising a solid dielectric insulation system. This architecture also includes arc fault venting – a feature considered mandatory by the firm for all medium voltage switchgear in service in overhead distribution networks.

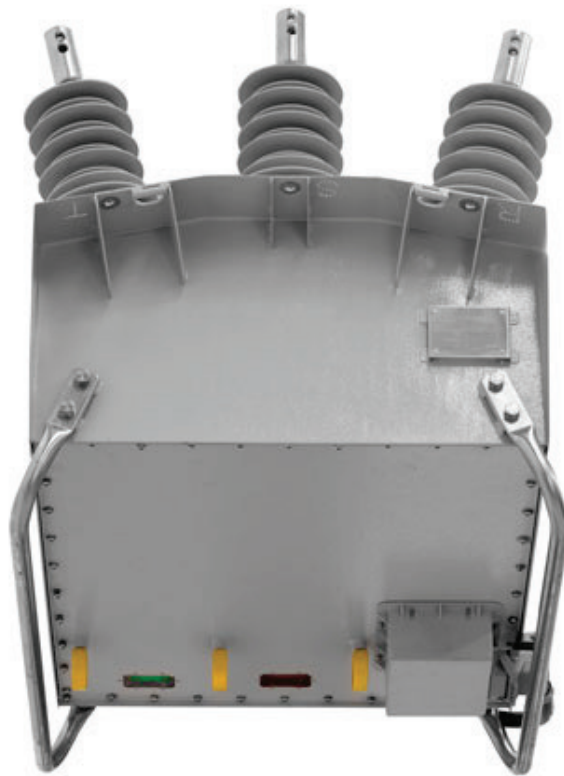


Figure 2 – A NOJA Power OSM Single Triple Recloser. Note the three independent mechanical lockout hook rings and per-phase mechanical phase indication.

“NOJA Power has previously supplied single triple products using three individual single phase tanks predominantly for the USA 4 wire distribution network market,” reports NOJA Power Group Managing Director Neil O’Sullivan. “But due to increased demand this new single tank variant has

been developed using our OSM38 tank frame size and it is suitable for all voltage classes 15kV, 27kV and 38kV in this new single tank single triple product. “

A comprehensive technical specification of the single triple OSM Recloser product is available directly from the firm. For more information, visit www.nojapower.com.au or contact your local NOJA Power Distributor Distributor.